

SELLING & RENTING  
HOMES

— Since 2005 —



LAND ESTATES

SALES, LETTINGS & MANAGEMENT



## FLAT 1 ELOISE COURT DARTFORD

**£1,250 Per Month**

- One bedroom apartment.
- Allocated parking space
- Great location.
- Modern throughout.
- Secure Gated Development

Land Estates are pleased to offer this ground floor, modern apartment in Dartford.

The apartment is set within a private secure gated development.

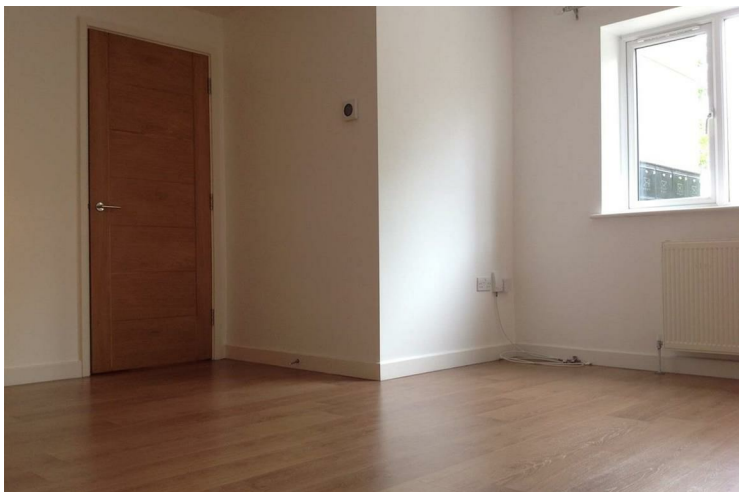
Comprising of an open plan kitchen/lounge with integrated appliances, a large double bedroom and a bathroom.

The property also benefits from a secure entry phone system and one allocated parking space.

This apartment is located within walking distance to a variety of travel options and shops.

This property is offered unfurnished and is available now.

If you are interested in this property, please contact Land Estates.







Energy Efficiency Rating		
	Current	Potential
<i>Very energy efficient - lower running costs</i>		
(92 plus) <b>A</b>		
(81-91) <b>B</b>		
(69-80) <b>C</b>		
(55-68) <b>D</b>		
(39-54) <b>E</b>		
(21-38) <b>F</b>		
(1-20) <b>G</b>		
<i>Not energy efficient - higher running costs</i>		
<b>England &amp; Wales</b>	EU Directive 2002/91/EC	

**EPC Rating: Council Tax Band: B**

Agents Note: Whilst every care has been taken to prepare these particulars, they are for guidance purposes only. All measurements are approximate and are for general guidance purposes only and whilst every care has been taken to ensure their accuracy, they should not be relied upon and potential buyers/tenants are advised to recheck the measurements

Land Estate  
6 Market Street  
Dartford  
Kent  
DA1 1ET

01322 413501  
info@landestate.co.uk  
www.landestate.co.uk



**LAND ESTATES**  
SALES, LETTINGS & MANAGEMENT